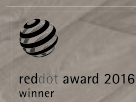


AURA care bed






reddot design award
winner 2016

 GERMAN
DESIGN
AWARD
WINNER
2018



Designing a product
is designing
“ a relationship ”

Steve Rogers

AURA – the premiumcare bed	4
Perfect functionality	6
Mobilising and protective.	9
Prevention pays off.	10
Sleeping surfaces	12
Integrated bed extension.	13
The right bed for every requirement	14
Integrated bed linen holder	16
Features and options	17
Specifications.	17
Head/foot boards	18
Accessories.	19
Wood veneers	20
Leather and fabric collections	21
Malsch INDIVIDUAL.	22



SIMPLICITY, carried to an an extreme, becomes ELEGANCE

Jon Franklin

The jurors of renowned design committees, such as the Red Dot and German Design Award, were impressed by the purist design of the AURA premium care bed.

The low care bed brilliantly combines design with function and safety. Its understated appearance does not reflect AURA's versatility.

A wide range of comfort functions contribute to the well-being of residents and create optimal conditions for safe and gentle care.

AURA – individuality and versatility down to the smallest detail. Experience maximum flexibility in terms of configuration, and create a design that reflects your taste. You can also benefit from the long-term durability of AURA and obtain planning reliability and creative freedom for your projects.



AURA



(1)



(2)



(3)



(4)



(5)

Perfect functionality

AURA stands for a wide range of functions and first-class design. The low care bed has a wide range of functions to ensure maximum comfort and optimum safety for residents and care staff.

Fall-prone residents in particular benefit from the **low position** (1) of the AURA, as the bed height significantly reduces the risk of injury due to falling out of bed. Other innovative fall prevention features are described on pages 10/11.

The **transfer position** (2) provides a comfortable intermediate height for optimal entry and exit at sitting level. Combined with the mobilisation position of the side rails, residents can get into and out of bed comfortably, safely and independently.

Ergonomic, back-friendly working is an important aspect for maintaining the health of care staff. The **working height** position (3) makes it possible to maintain an upright posture while caring for residents.

Automatic keys on the hand controller move the sleeping surface into a comfortable, upright sitting position. The **comfort sitting position** (4) has a positive effect on vital functions, facilitates orientation for residents and allows them to communicate with each other.

The **Trendelenburg position** (5) can assist with stabilising residents who have circulatory problems. The motorised adjustment in the head-lowering device enables quick action.







Mobilising and protective

The advantages of the retractable vertical side rail system are its compact design, which does not require any lateral space, and the exceptional stability of the anodised aluminium precision-processed elements. A high-quality solid wood handrail with an edged design strip demonstrates the high quality of the AURA premium care bed.

The side rails on the AURA are very discreetly attached.

“The combination of wood and aluminium radiates warmth and elegance.”

Red Dot Design Award



The vertical side rail provides innovative, extremely convenient one-handed operation.

The vertical side rail system

The AURA features the new version of the vertical side rail system with convenient one-handed operation as standard.

In addition to securing the resident, the head elements can be used as a **mobilisation aid** (1). The secure handhold provides assistance with getting up or going to bed. The sophisticated layout of the sleeping surface and side rails facilitates the resident's transition to the exit position.

In the **standby position** (2), the side rail is lowered and allows for comfortable sitting on the edge of the bed.

The extended **fall prevention** (3) position with tangible boundaries of the sleeping surface counteracts unconscious rolling out and assists care staff during repositioning.

When telescoped to its maximum height, it is possible to completely **secure** (4) the resident.

Prevention pays off



Fall-prone residents with dementia need special attention. Lack of staff is often an argument for using side rails to secure these risk groups. Our approach is to use preventive measures to identify and avoid potential risks at an early stage. For our care beds, we offer sensible alternatives to restraint measures.

1. – Take protective measures

The extended fall prevention function on the vertically retractable side rails can reduce the risk of unconsciously rolling out through haptic boundaries around the sleeping surface. The handrail of the side rail perceptibly raises the edge of the mattress. Residents can climb over it easily at any time.



Help when it is needed:

the Malsch Bed-Exit_system notifies care staff when a resident leaves their bed.



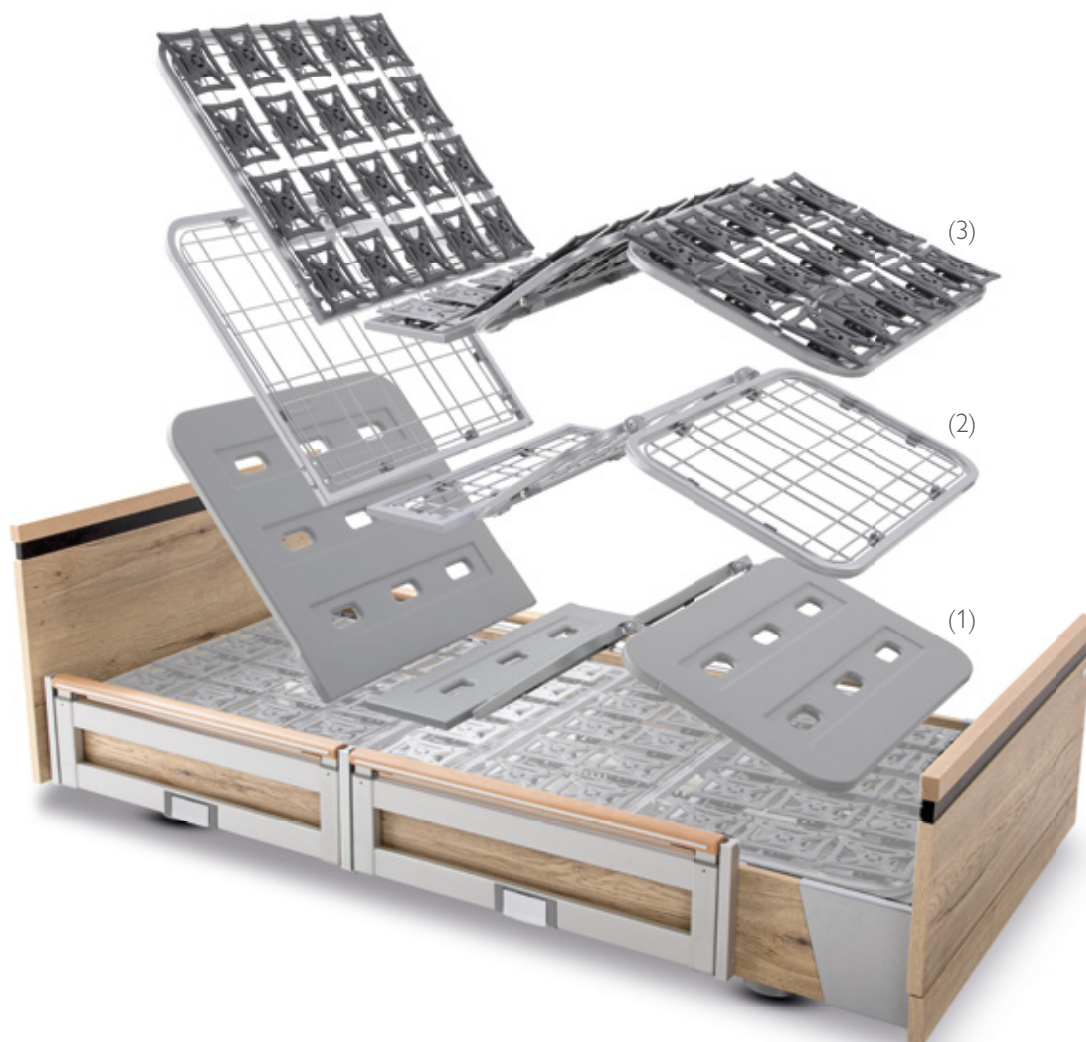
2. – Minimize the risk of falling

The AURA care bed has a low position for fall prevention, in which the sleeping surface can be lowered to a height of only 25 or 26 cm (AURA LR). In this position, if a fall mat is placed in front of the bed, the risk of injury to the resident in the event of a fall is greatly reduced.

3. – Detect and report risks at an early stage

The **Bed-Exit-System** is an optional upgrade option for Malsch care beds. The wireless system is easy to use and alerts care staff via the existing call system or various other channels if a resident leaves their bed or does not return to bed after a specified time.

Sleeping surfaces



The 4-section sleeping surfaces with mattress compensation offer outstanding ergonomics and a high degree of comfort. Retracting the back rest during the adjustment process helps to relieve pressure in the buttocks area.

The **ABS sleeping surface** offers easy handling and quick cleaning of the removable plastic pads (1).

As a basic variant, the **metal mesh sleeping surface** (2) has excellent ventilation properties and enables optimal moisture transfer.

The flexible spring elements of the **comfort sleeping surface** (3) adapt perfectly to the body and are suitable for preventing bedsores.



Integrated bed extension

Changing residents require flexible solutions. The integrated bed extension enables optimal lying comfort, even for tall people.

The sleeping surface can be extended in a matter of seconds without tools using a quick-release mechanism. All bed functions remain fully usable in the extended state.

The system can be telescoped in two stages (by 10 or 20 cm) and does not require additional protectors. For an extension of 20 cm, we recommend using an optional mattress insert.



Figure shows the export model



The right bed for every requirement



- Natural Halifax oak timber construction
- V600 head/foot boards, black inlay*
- Integrated bed linen holder*
- Vertically retractable side rails with one-handed operation, split on both sides, with solid wood handrail

AURA

The classic wooden design of the **award-winning AURA low care bed** offers a combination of elegance and maximum functionality. The hidden castors and central brake enhance its extremely homely character.



- Natural Halifax oak timber construction
- V600 head/foot boards, black inlay*
- Vertically retractable side rails with one-handed operation at the head of the bed, with solid wood handrail

AURA LR

The strengths of the **AURA LR** lie in its mobility. Manoeuvring it is a breeze due to smooth-running **100mm double casters** and a central brake.

The AURA low care bed is available in the following side rail versions:

- Without side rails
- Four side rail elements all around the bed
- Side rails on the head side as mobility aid

* Optional equipment

AURA “Loft”

The AURA with the homely design of a high-quality upholstered bed. With **elaborate leather quilting**, the “Loft” version of the AURA low care bed is a real eye-catcher. It combines a wide range of functions with a hint of extravagance. Double castors and a central brake plus vertical side rails are also available in the AURA LR “Loft” version.



- Leather design Delius Solo 4551, anthracite diamond quilting
- V800 head/foot boards

The high-quality finished leather quilting in the “Loft” design variant is available in many colours (see page 21).



- Leather design Delius Solo 8551, grey diamond quilting
- V850 head/foot boards
- Vertically retractable side rails with one-handed operation at the head of the bed, with solid wood handrail

The thinner upholstery on the V850 head/foot board makes the AURA “Loft” appear a little more elegant. The side rails are a practical mobility aid in this version.



Integrated bed linen holder

Practical, hygienic and easy to use: the optional bed linen holder facilitates the work of care staff and prevents the bed sheets from coming into contact with the floor.



Features and options

	AURA	AURA LR
Low position	25 cm	26 cm
Working height	82 cm	82 cm
Fall prevention	•	•
Transfer position	•	•
Comfort sitting position	•	•
Trendelenburg positioning (lockable)	•	•
CPR emergency lowering	◦	◦
Back rest mattress compensation	•	•
Bed extension 10 cm/20 cm	•	•
Bed linen holder	◦	◦
Double castors	50 mm	100 mm
Hidden castors	•	-
Central brake	•	•
EVGS side rails (with one-handed operation)	•	•
Drive system with safety extra-low voltage	•	•
Hand controller with locking function	•	•
Under bed lighting	◦	◦

• Standard ◦ optional

Specifications

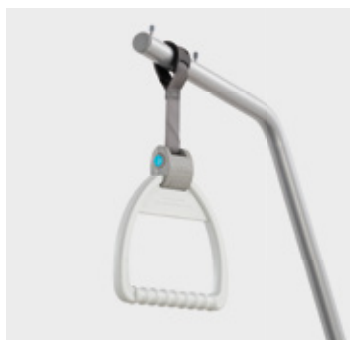
Dimensions and weight	AURA/AURA LR	AURA "Loft"
Sleeping surface	200×90 cm	200×90 cm
Outer dimensions	206×100 cm	218×107 cm
Safe working load	max. 225 kg	max. 225 kg
Easy underneath access	13 cm	13 cm
Total weight	approx. 130 kg	approx. 130 kg

Head/foot boards

The characteristic AURA head/foot board with contrasting colour inlay and decorative trim at the foot end comes in open or closed versions.



Extract from the accessories range



Trapeze bar



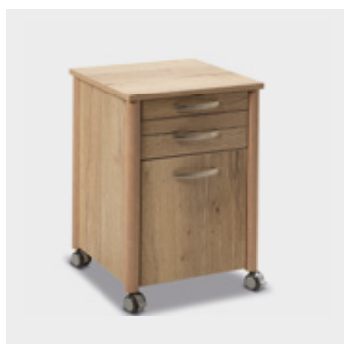
Wall deflector



CURA bed light



Bedside cabinet WIII



Bedside cabinet WIV



Server WXL

Our extensive range of accessories can be found in a separate catalogue.

We'll also be happy to send you a copy in the post. Alternatively, the PDF file is available for download at en.bettenmalsch.com/download.

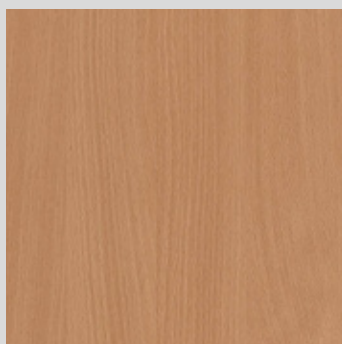


Wood veneers

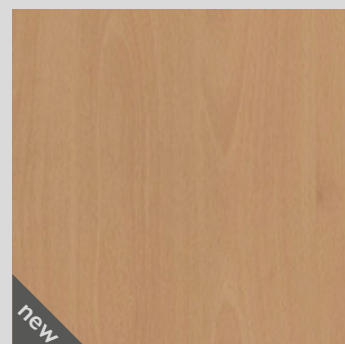
The design selection contains reproductions. Accurately colour-matched design selection only with the original pattern. Subject to the use of similar alternative designs from other manufacturers in the event of unavailability. More designs at [bettenmalsch.com](https://www.bettenmalsch.com)



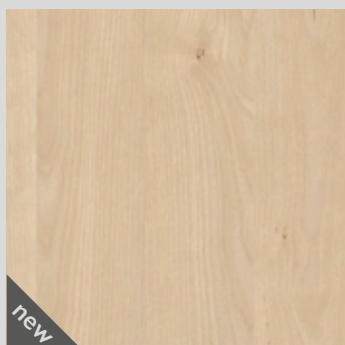
Polar Aland Pine H3433



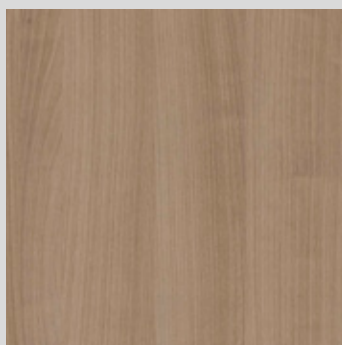
Bavaria Beech H1511



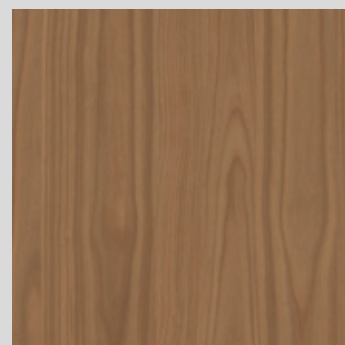
Ellmau Beech H1582



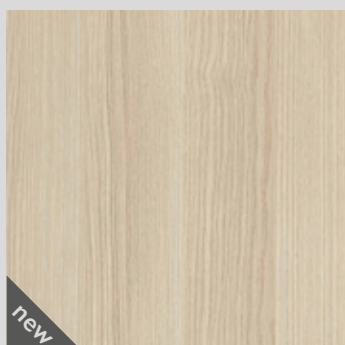
Mandal Natural Maple H3840



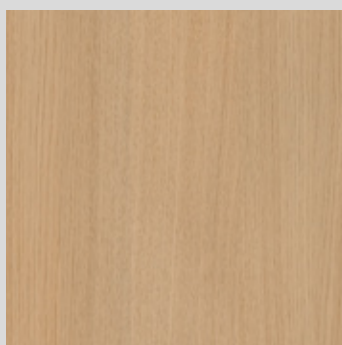
Verona Cherry H1615



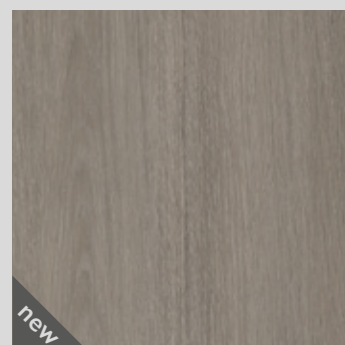
Locarno Cherry H1636



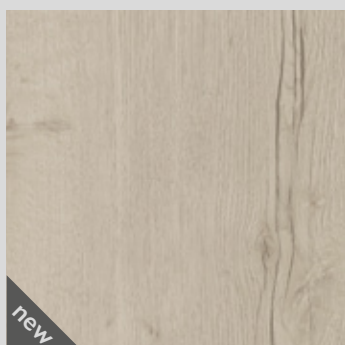
Lyon Ash Sand Beige H1298



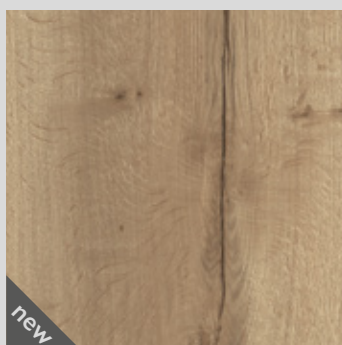
Sorano Oak, naturally light H1334



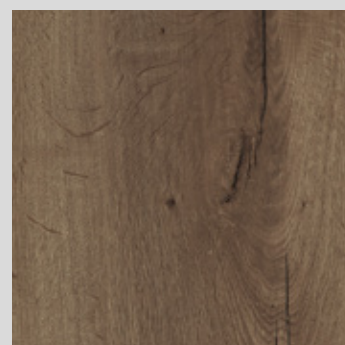
Lorenzo Oak H3146



White Halifax Oak H1176



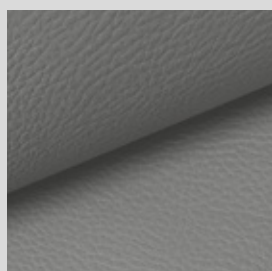
Natural Halifax Oak H1180



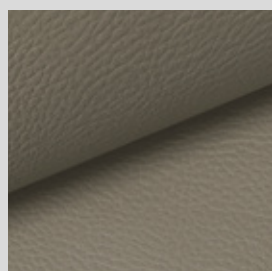
Tobacco Halifax Oak H1181

Leather collection

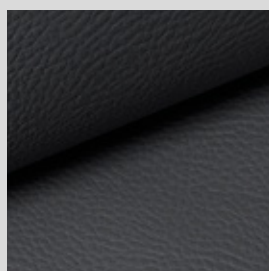
Accurately colour-matched leather/fabric selection only with the original pattern. Subject to the use of similar alternative fabrics from other manufacturers in the event of unavailability.



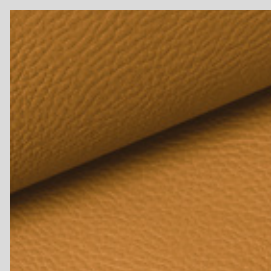
Solo Stone 8551



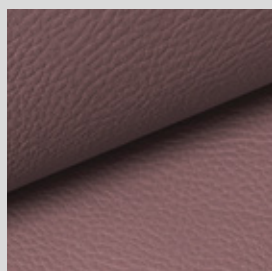
Solo Taupe 8552



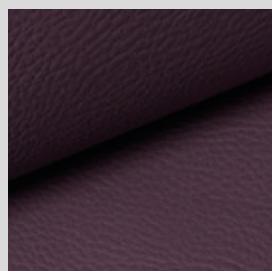
Solo Anthracite 8553



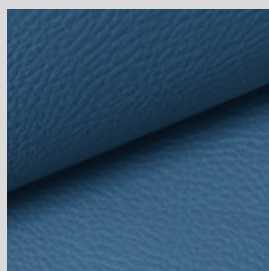
Solo Curry 2550



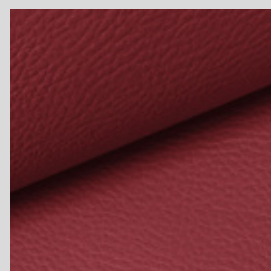
Solo Mauve 4550



Solo Violet 4551

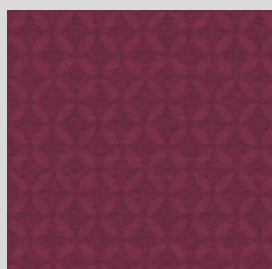


Solo Blue 5550

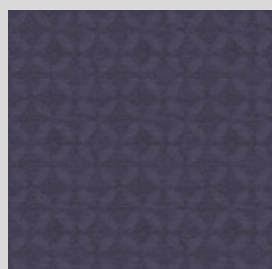


Solo Red 3552

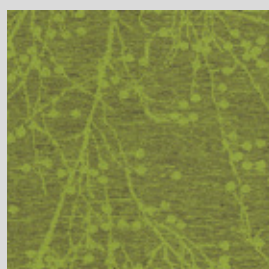
Fabric collection



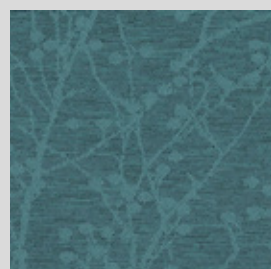
ASPEN Petal



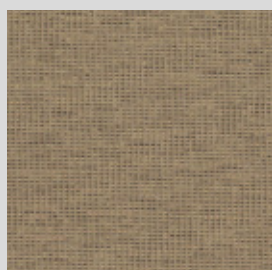
ASPEN Lavender



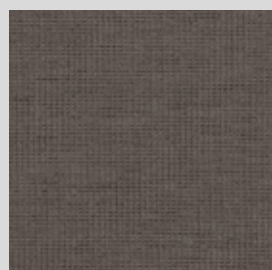
BLOSSOM Gooseberry



BLOSSOM Lake



CEDAR Almond



CEDAR Nutmeg



TRAX Black



TRAX Silver

The variety of wooden designs or leather and fabric upholstery makes it possible to create a bed to complement individual room concepts. The samples shown are just a small selection of our extensive collection.



“The average gives the
world its existence, the
extraordinary its value.”

Oscar Wilde



malsch-individual.de

Betten Malsch GmbH

Rohbergstr. 9 | D-36208 Wildeck

Tel.: +49 (0) 6626 915-100

Fax: +49 (0) 6626 915-116

E-Mail: info@bettenmalsch.de

bettenmalsch.com

